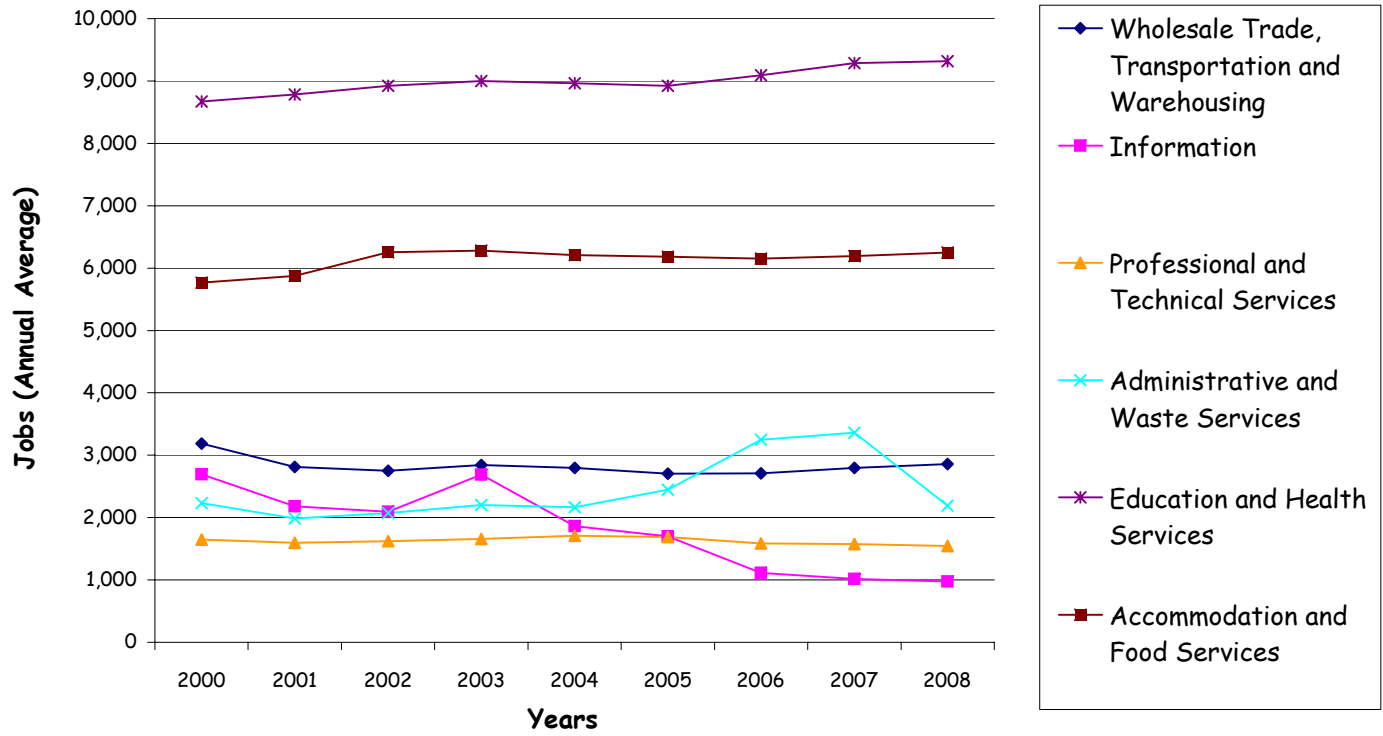


Ulster County Employment Trends in Service Providing Industries, 2000 thru 2008



Source: New York State Department of Labor, Quarterly Census of Employment and Wages

	<u>2000</u>	<u>2001</u>	<u>2002</u>	<u>2003</u>	<u>2004</u>	<u>2005</u>	<u>2006</u>	<u>2007</u>	<u>2008</u>
Wholesale Trade, Transportation and Warehousing	3,185	2,814	2,750	2,845	2,795	2,703	2,711	2,795	2,858
Information	2,692	2,182	2,091	2,691	1,863	1,700	1,113	1,014	974
Professional and Technical Services	1,646	1,598	1,621	1,659	1,707	1,690	1,585	1,575	1,546
Administrative and Waste Services	2,232	1,985	2,075	2,199	2,166	2,448	3,246	3,362	2,191
Education and Health Services	8,673	8,782	8,925	8,999	8,963	8,924	9,093	9,285	9,319
Accommodation and Food Services	5,768	5,876	6,254	6,280	6,209	6,182	6,153	6,192	6,251